

Grousemount Windfarm

A WHOLLY OWNED SUBSIDIARY OF



Energy for
generations

DEVELOPED BY
KERRY WIND POWER LTD

FIRST PROJECT NEWSLETTER

SUMMER 2017

On behalf of myself John Kelly, Project Director & Diarmuid O'Sullivan, Grousemount Wind Farm Community Liaison Officer, we are very pleased to issue the first newsletter for Grousemount Wind Farm project. We expect to issue several more newsletters as the project progresses to keep you, the local community, informed of ongoing progress. This is a very important and exciting project for Kerry Wind Power Ltd and ESB. We are committed to engaging with all stakeholders to ensure the smooth delivery of Grousemount Wind Farm over the coming 2 years.

Should you want more information on any topic covered in this newsletter please contact Diarmuid as necessary. Contact details are at the back.

Kind Regards,
John Kelly, Project Director
Diarmuid O'Sullivan, Community Liaison Officer



Project details

Grousemount Wind Farm will be developed by Kerry Wind Power Ltd a wholly owned subsidiary of ESB. The site is located in South East Kerry, between the villages of Kilgarvan and Coolea in Co Cork. The complete project was granted permission from An Bord Pleanála in Summer 2016. Grousemount Wind Farm will begin construction in the summer of 2017.

In this issue:

- Project details
- Benefits of the development
- Construction Overview
- Grousemount Community Benefit Scheme
- How to contact us



GROUSEMOUNT WIND FARM

BENEFITS OF THE DEVELOPMENT



CLEAN ELECTRICITY 70,000 HOMES

for homes, farms, hospitals, schools and businesses across Ireland.

RATES PAID by the wind farm to Kerry County Council will support the provision of local services.



OVER 3.6 M

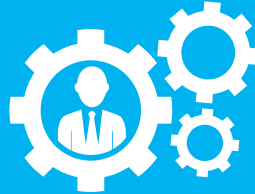
total value of the Community Benefit Fund to support local projects and amenities/ recreational facilities.

SUPPORT THE TRANSITION

from Ireland's reliance on imported fossil fuels to clean, locally generated renewable energy sources. Make a significant contribution towards Ireland's commitment of sourcing 40% of our electricity needs from renewable sources by 2020.



STONE AND CONCRETE used for construction will be sourced from local quarries.



6 FULL TIME JOBS

associated with wind farm maintenance during operational phase.



JOBS 70

construction jobs at peak employment.

Construction overview

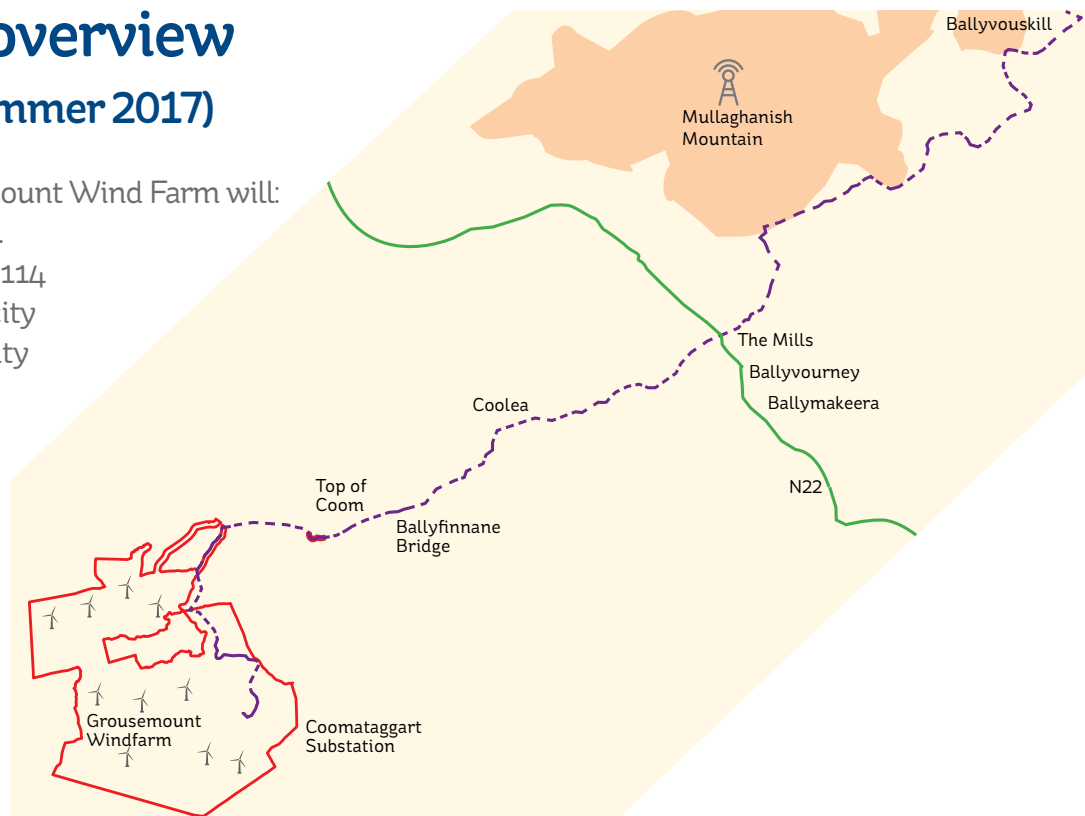
(Commencement Summer 2017)

Once completed, the Grousemount Wind Farm will:

- Comprise 38 wind turbines.
- Have a capacity to produce 114 Megawatts (MW) of electricity which will produce electricity for approximately 70,000 households*
www.iwea.com*

Construction of the Grousemount Wind Farm will be carried out over a number of different phases. The next newsletter will provide you with an overview of the construction period for various aspects of the windfarm project.

More detailed information relating to specific areas will be provided at organised public meetings which will be held over the coming weeks at the Top of Coom Bar, Coolea Community Hall and The Mills Inn. It is envisaged this construction phase will occur between 2017-2019.



The project has five main construction elements:

- Construction of foundations for the turbines and the development of access tracks on the site.
- Construction of the new Coomataggart 110 kV substation (located on the windfarm site).
- Construction and installation of underground cables from the new Coomataggart 110 kV substation to the existing Ballyvouskill 220 kV substation near Millstreet, Co. Cork.
- Construction of temporary bridge over the Sullane River.
- Delivery of turbine components.

Grousemount Community Benefit Scheme

ESB have developed a community fund that reflects the support that our wind energy projects can provide to local communities. An annual community benefit scheme, which will be in excess of €150,000 per year will be available for the lifetime (25 years) of the wind farm to fund local community projects and initiatives. This substantial community fund will become effective at the end of construction and start of power generation. This is expected in the second half of 2019.



Construction Phase Funding

This has created funding that will prioritise project initiatives that support and benefit the local community in the areas surrounding Grousemount Wind Farm impacted by the construction works. This initial fund will be available to community and voluntary groups as well as organisations with a charitable status.

Local projects and initiatives that have been awarded funding to date:

2015	Kilgarvan Show	Community Show
2016	Coolea Tidy Towns	Memorial Park
2016	Glen Committee	Defibrillators
2016	Ballyvourney Day Care	Glass house
2016	Ballyvourney/ Coolea show	Agricultural show
2016	Eigse Festival	Irish music festival, 25th anniversary
2017	Coolea National School	School Fencing
2017	Ladies GAA Ballyvourney/ Coolea	GAA Training kits/Materials

About ESB

ESB is Ireland's foremost energy company and the largest supplier of renewable electricity in Ireland. Through innovation, expertise and investment, ESB is leading the way in developing a modern, efficient electricity system, capable of delivering sustainable and competitive energy supplies to our customers. Every day, ESB works for a better energy future by investing in low carbon generating technologies, building smarter electricity networks and working with others to find innovative solutions to today's energy challenges.

Established in 1927, ESB is a strong, diversified and vertically integrated utility. ESB operates right across the electricity market, from generation through transmission, and distribution to supply. ESB also operates in a range of complementary sectors including telecommunications, international engineering consultancy and gas.

ESB currently operates more than 400MW of wind energy projects throughout Ireland and the United Kingdom. ESB's wind delivery programme is currently forecast to deliver an additional 400MW by 2018 toward a target of 2,500MW by 2025.

ESB contributes over €2billion annually to the Irish economy through dividends, investments, taxes and jobs. ESB provides significant employment both directly, with 7,600 employees, and indirectly through contractors and service providers.

Read more at www://esb.ie/who-we-are/

HOW TO CONTACT US

The project team is committed to keeping the local community up to date with the construction of the Grousemount Wind Farm. Our Community Liaison Officer (CLO) and members of the project team are available to meet you locally to discuss all aspects of the project at your convenience. We will also provide regular updates through newsletters, texts and on the project website, www.grousemountwindfarm.ie. If you wish to be included on the communication list please contact CLO below.

If you have any questions or queries, please contact us on:

Local

@ Email: info@grousemountwindfarm.ie

📄 For more information about the Grousemount Wind Farm project, please visit www.grousemountwindfarm.ie.

Kerry Wind Power Ltd

Name: Diarmuid O'Sullivan

☎ Phone: (087) 9882288

@ Email: Info@grousemountwindfarm.ie

